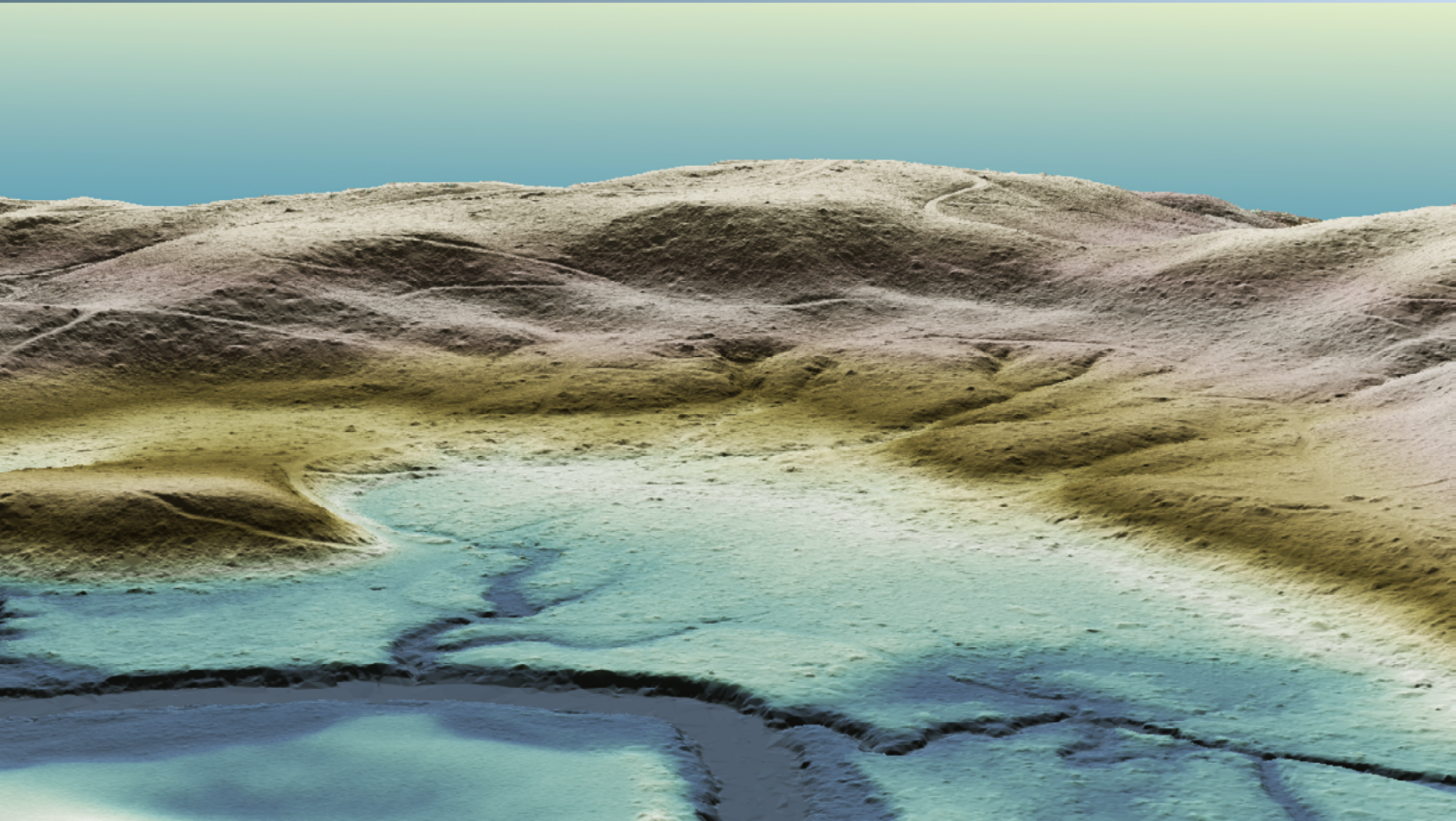


June 12, 2015



Willapa River Valley LiDAR

Final Technical Data Report



Andy Norton

Puget Sound LiDAR Consortium
1011 Western Ave, Suite 500
Seattle, WA 98104
PH: 260-464-7527

QSI Environmental

517 SW 2nd St., Suite 400
Corvallis, OR 97333
PH: 541-752-1204

Table of Contents

Introduction	1
Deliverable Products.....	2
Acquisition.....	4
Planning	4
Ground Control	5
Monumentation	5
Ground Survey Points (GSPs).....	6
Airborne Survey.....	8
LiDAR	8
Processessing.....	9
LiDAR Data.....	9
Results and Discussion	12
LiDAR Density	12
LiDAR Accuracy Assessments	17
LiDAR Absolute Accuracy.....	17
LiDAR Vertical Relative Accuracy.....	18
Certifications.....	20
Selected Images.....	21
Glossary	24
Appendix A - Accuracy Controls.....	26
Appendix B - Individual Delivery Statistics	28

Cover Photo: View looking west over a clearcut mound located southwest of Holcomb, Washington. The image was created from the gridded LiDAR surface colored by elevation.

Introduction



This photo taken by QSI acquisition staff shows a view of open landscape nearby the Willapa River Valley site in Washington.

In January, 2014, Quantum Spatial (QSI), was contracted by the Puget Sound LiDAR Consortium (PSLC), to collect light detection and ranging (LiDAR), data for the Willapa River Valley site in Pacific and Lewis counties in southwest Washington. The initial delivery (delivery 1), was completed in April, 2014 and covered 35,472 acres of the total project area. Due to weather and resource constraints, the remaining acquisition (delivery 2) was completed in December 2014 during leaf-off season. Acquisition dates and acreage are shown in Table 1.

This report documents contract specifications, data acquisition procedures, processing methods, and analysis of the complete final dataset including LiDAR accuracy and density. A complete list of contracted deliverables provided to PSLC is shown in Table 2, and the project extent is shown in Figure 1.

Table 1: Acquisition dates, acreage, and data types collected on the Willapa River Valley site

Project Site	Contracted Acres	Delivered Acres	Acquisition Dates	Data Type
Willapa River Valley	98,351	101,272.7	4/10/14, 4/13/14, 4/14/14, 12/30/14	LiDAR

Deliverable Products

Table 2: Products delivered to PSLC for the Willapa River Valley site

Willapa River Valley Products Projection: Washington State Plane South Horizontal Datum: NAD83 CORS96 (HARN)* Vertical Datum: NAVD88 (GEOID03) Units: U.S. Survey Feet	
Points	LAS v 1.2 <ul style="list-style-type: none"> • All Returns Comma Delimited ASCII Files <ul style="list-style-type: none"> • All Returns (*asc) • Ground Returns (*gnd)
Rasters	3.0 Foot ESRI Grids <ul style="list-style-type: none"> • Bare Earth Model • Highest Hit Model 1.5 Foot ESRI Grids <ul style="list-style-type: none"> • Intensity Images
Vectors	Shapefiles (*.shp) <ul style="list-style-type: none"> • Site Boundary • LiDAR Tile Index • DEM Tile Index • Smooth Best Estimate Trajectory (SBETs) • Ground Control Points • Control Monuments

*The data were created in NAD83 (CORS96), but for GIS purposes are defined as NAD83 (HARN) as per PSLC specifications.

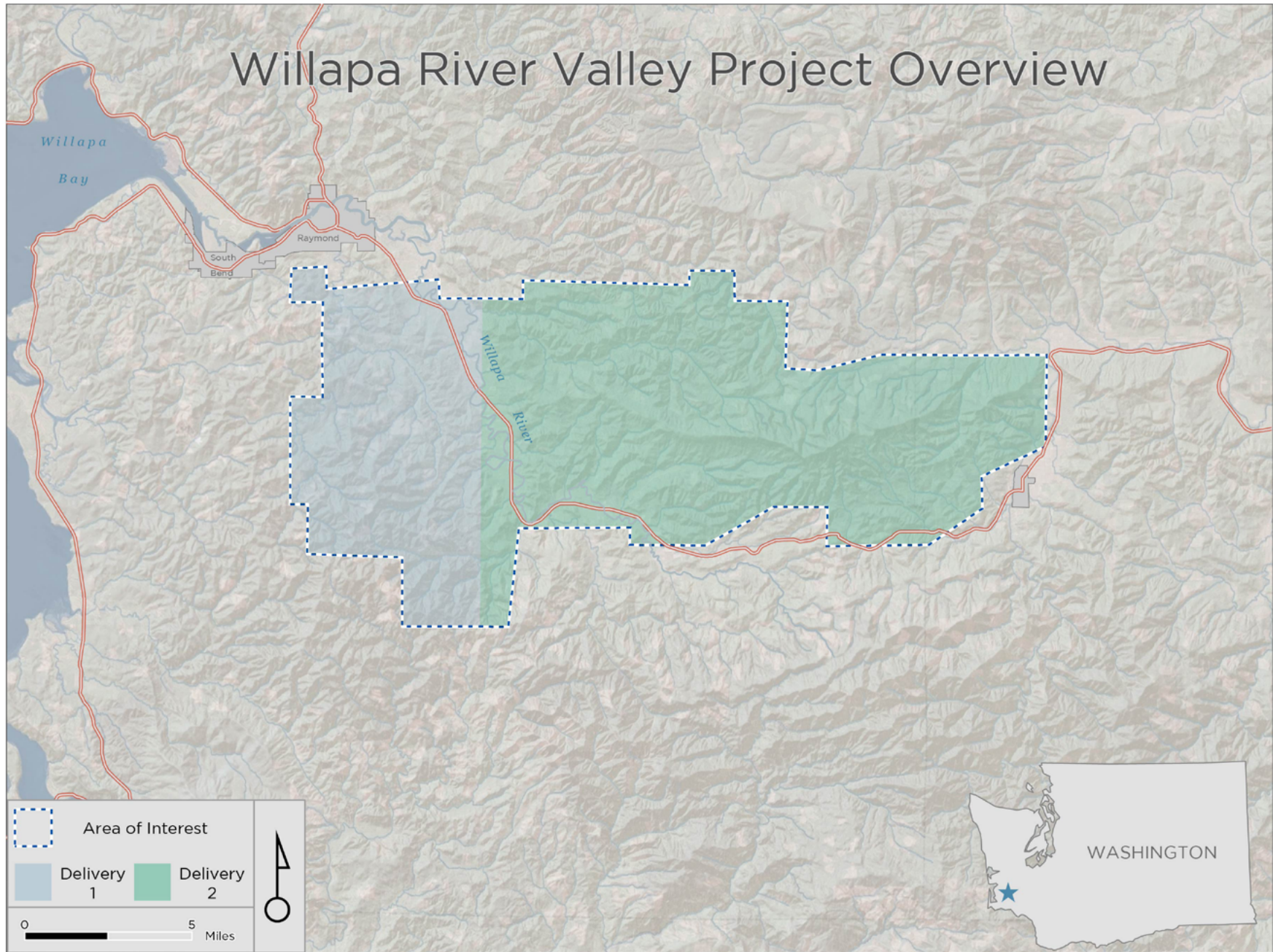


Figure 1: Project Overview map of the Willapa River Valley site in Washington

Acquisition

QSI's ground acquisition equipment set up in the Willapa River Valley LiDAR study area.



Planning

In preparation for data collection, QSI reviewed the project area and developed a specialized flight plan to ensure complete coverage of the Willapa River Valley LiDAR study area at the target point density of ≥ 8.0 points/m² (0.74 points/ft²). Acquisition parameters including orientation relative to terrain, flight altitude, pulse rate, scan angle, and ground speed were adapted to optimize flight paths and flight times while meeting all contract specifications.

Factors such as satellite constellation availability and weather windows must be considered during the planning stage. Any weather hazards or conditions affecting the flight were continuously monitored due to their potential impact on the daily success of airborne and ground operations. In addition, logistical considerations including private property access and potential air space restrictions were reviewed.

Ground Control

Ground control surveys, including monumentation, aerial targets and ground survey points (GSPs), were conducted to support the airborne acquisition. Ground control data were used to geospatially correct the aircraft positional coordinate data and to perform quality assurance checks on final LiDAR data and orthoimagery products.



QSI-Established Monument WV_01

Monumentation

The spatial configuration of ground survey monuments provided redundant control within 13 nautical miles of the mission areas for LiDAR flights. Monuments were also used for collection of ground survey points using real time kinematic (RTK) and post processed kinematic (PPK) survey techniques.

Monument locations were selected with consideration for satellite visibility, field crew safety, and optimal location for GSP coverage. QSI utilized one existing monument and established four new monuments for the Willapa River Valley LiDAR project (Table 3, Figure 2). New monumentation was set using 5/8" x 30" rebar topped with stamped 2" aluminum caps. QSI's professional land surveyor, Christopher Glantz (WAPLS#48755) oversaw and certified the establishment of all monuments.

Table 3: Monuments established for the Willapa River Valley acquisition. Coordinates are on the NAD83 (CORS96) datum, epoch 2002 .00, NAVD88 height referenced to Geoid03.

PID	Latitude	Longitude	Ellipsoid Height (m)	NAVD88 Height (m)
CH_04	46° 35' 10.37851"	-123° 17' 06.32170"	95.964	117.019
PL_02*	46° 32' 35.82834"	-123° 27' 48.29635"	94.162	115.442
WV_01	46° 33' 47.66578"	-123° 33' 01.56703"	37.680	59.354
WV_02	46° 39' 15.27164"	-123° 40' 56.24091"	-16.309	6.013
WV_03	46° 32' 36.53160"	-123° 27' 47.67305"	94.694	115.973
*PL_02 was replaced by WV_03				

To correct the continuously recorded on-board measurements of the aircraft position, QSI concurrently conducted multiple static Global Navigation Satellite System (GNSS) ground surveys (1 Hz recording frequency) over each monument. During post-processing, the static GPS data were triangulated with nearby Continuously Operating Reference Stations (CORS) using the Online Positioning User Service (OPUS*) for precise positioning. Multiple independent sessions over the same monument were processed to confirm antenna height measurements and to refine position accuracy.

* OPUS is a free service provided by the National Geodetic Survey to process corrected monument positions. <http://www.ngs.noaa.gov/OPUS>.

Monuments were established according to the national standard for geodetic control networks, as specified in the Federal Geographic Data Committee (FGDC) Geospatial Positioning Accuracy Standards for geodetic networks*. This standard provides guidelines for classification of monument quality at the 95% confidence interval as a basis for comparing the quality of one control network to another. The monument rating for this project is shown in Table 4.

Table 4: Federal Geographic Data Committee monument rating for network accuracy

Direction	Rating
1.96 x St Dev NE:	0.020 m
1.96 x St Dev z:	0.050 m

Ground Survey Points (GSPs)

Ground survey points were collected using real time kinematic and post-processed kinematic survey techniques. A Trimble R7 base unit was positioned at a nearby monument to broadcast a kinematic correction to a roving Trimble R6 or R8 GNSS receiver. All GSP measurements were made during periods with a Position Dilution of Precision (PDOP) of ≤ 3.0 with at least six satellites in view of the stationary and roving receivers. When collecting RTK and PPK data, the rover records data while stationary for five seconds, then calculates the pseudorange position using at least three one-second epochs. Relative errors for any GSP position must be less than 1.5 cm horizontal and 2.0 cm vertical in order to be accepted. See Table 5 for Trimble unit specifications.

GSPs were collected in areas where good satellite visibility was achieved on paved roads and other hard surfaces such as gravel or packed dirt roads. GSP measurements were not taken on highly reflective surfaces such as center line stripes or lane markings on roads due to the increased noise seen in the laser returns over these surfaces. GSPs were collected within as many flightlines as possible, however the distribution of GSPs depended on ground access constraints and monument locations and may not be equitably distributed throughout the study area (Figure 2).

Table 5: Trimble equipment identification

Receiver Model	Antenna	OPUS Antenna ID	Use
Trimble R6	Integrated GNSS Antenna R6	TRM_R6	Rover
Trimble R7 GNSS	Zephyr GNSS Geodetic Model 2 RoHS	TRM57971.00	Static
Trimble R8	Integrated Antenna R8 Model 2	TRM_R8_GNSS	Static, Rover

* Federal Geographic Data Committee, Geospatial Positioning Accuracy Standards (FGDC-STD-007.2-1998). Part 2: Standards for Geodetic Networks, Table 2.1, page 2-3. <http://www.fgdc.gov/standards/projects/FGDC-standards-projects/accuracy/part2/chapter2>

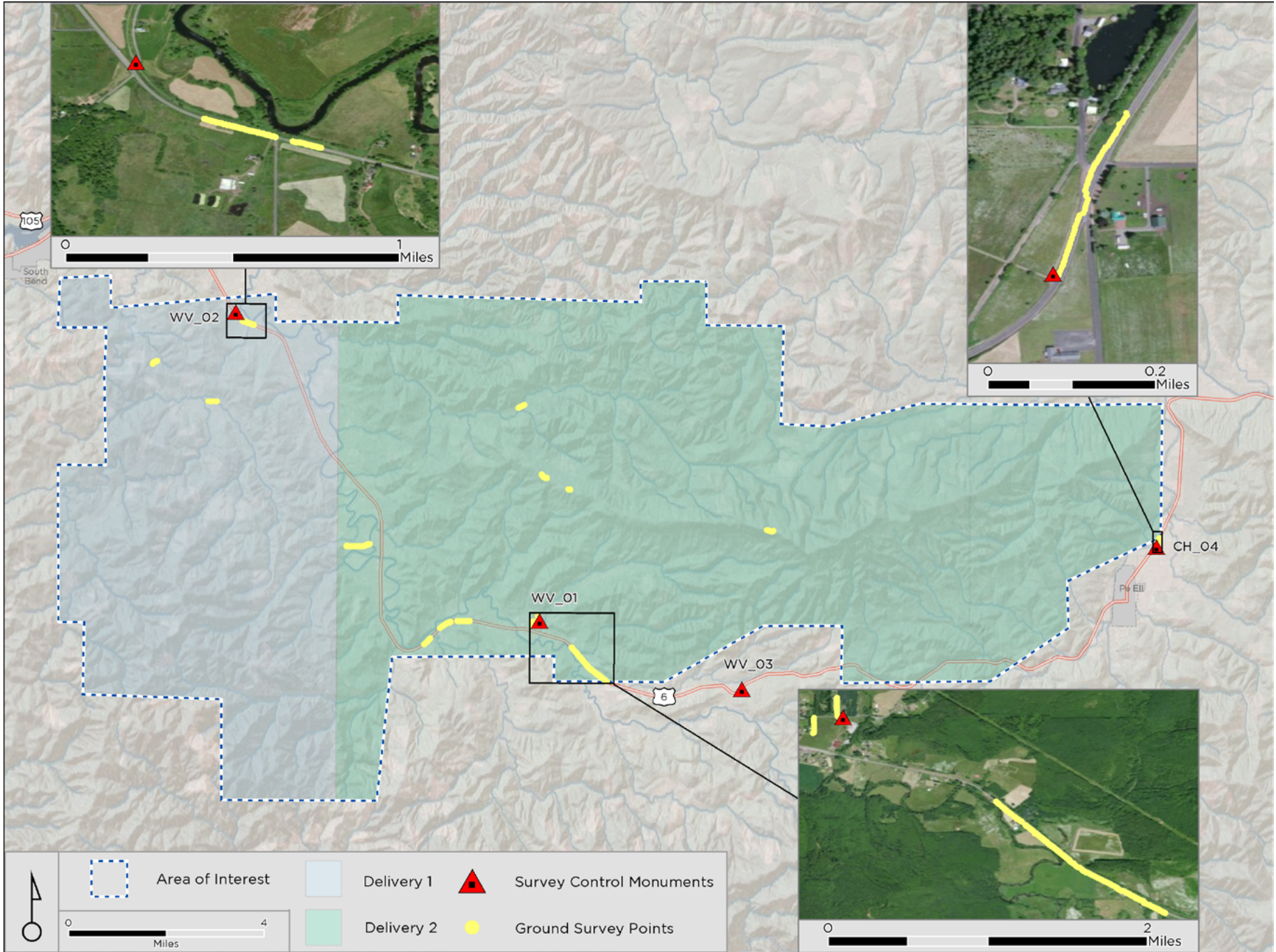


Figure 2: Ground Control Location Map

Airborne Survey

LiDAR

The LiDAR survey was accomplished using a Leica ALS70 system mounted in a Cessna Caravan and a Partenavia aircraft. Table 6 summarizes the settings used to yield an average pulse density of ≥ 8 pulses/m² over the Willapa River Valley project area. The Leica ALS70 laser system can record unlimited range measurements (returns) per pulse, but typically does not record more than 5 returns per pulse. It is not uncommon for some types of surfaces (e.g., dense vegetation or water) to return fewer pulses to the LiDAR sensor than the laser originally emitted. The discrepancy between first return and overall delivered density will vary depending on terrain, land cover, and the prevalence of water bodies. All discernible laser returns were processed for the output dataset.

Table 6: LiDAR specifications and survey settings

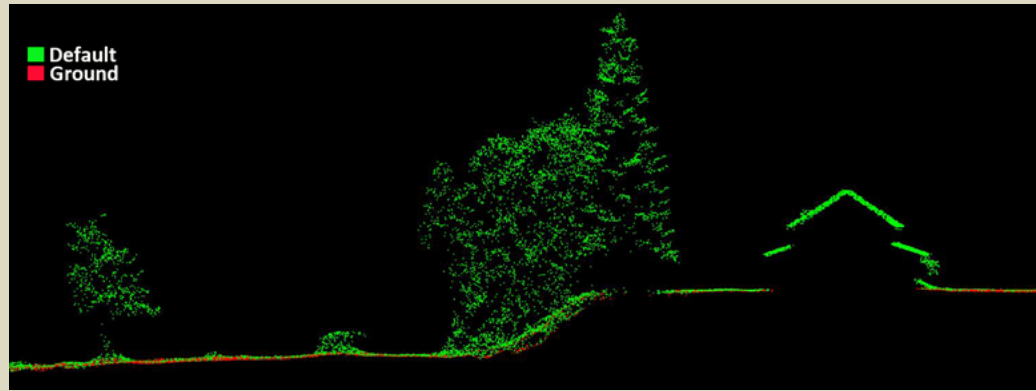
LiDAR Survey Settings & Specifications	
Acquisition Dates	4/10/14, 4/13/14, 4/14/14, 12/30/14
Aircrafts Used	Caravan and Partenavia
Sensor	Leica ALS70
Survey Altitude (AGL)	1400 m
Target Pulse Rate	180 - 199 kHz
Pulse Mode	Single Pulse in Air (SPiA)
Laser Pulse Diameter	32 cm
Mirror Scan Rate	41 Hz
Field of View	30°
GPS Baselines	≤ 13 nm
GPS PDOP	≤ 3.0
GPS Satellite Constellation	≥ 6
Maximum Returns	Unlimited, but typically not more than 5
Intensity	8-bit
Resolution/Density	Average 8 pulses/m ²
Accuracy	RMSEZ ≤ 15 cm



Leica ALS70 LiDAR sensor

All areas were surveyed with an opposing flight line side-lap of $\geq 50\%$ ($\geq 100\%$ overlap) in order to reduce laser shadowing and increase surface laser painting. To accurately solve for laser point position (geographic coordinates x, y and z), the positional coordinates of the airborne sensor and the attitude of the aircraft were recorded continuously throughout the LiDAR data collection mission. Position of the aircraft was measured twice per second (2 Hz) by an on-board differential GPS unit, and aircraft attitude was measured 200 times per second (200 Hz) as pitch, roll and yaw (heading) from an on-board inertial measurement unit (IMU). To allow for post-processing correction and calibration, aircraft and sensor position and attitude data are indexed by GPS time.

View of a building and vegetation located southeast of Holcomb, Washington. The image was created from a 3 meter cross section of the 3D LiDAR point cloud and colored by point class.



LiDAR Data

Upon completion of data acquisition, QSI processing staff initiated a suite of automated and manual techniques to process the data into the requested deliverables. Processing tasks included GPS control computations, smoothed best estimate trajectory (SBET) calculations, kinematic corrections, calculation of laser point position, sensor and data calibration for optimal relative and absolute accuracy, and LiDAR point classification (Table 7). Processing methodologies were tailored for the landscape. Brief descriptions of these tasks are shown in Table 8.

Table 7: ASPRS LAS classification standards applied to the Willapa River Valley dataset

Classification Number	Classification Name	Classification Description
1	Default/ Unclassified	Laser returns that are not included in the ground class, composed of vegetation and man-made structures
2	Ground	Laser returns that are determined to be ground using automated and manual cleaning algorithms

Table 8: LiDAR processing workflow

Resolve kinematic corrections for aircraft position data using kinematic aircraft GPS and static ground GPS data. Develop a smoothed best estimate of trajectory (SBET) file that blends post-processed aircraft position with sensor head position and attitude recorded throughout the survey.	Waypoint Inertial Explorer v.8.5
Calculate laser point position by associating SBET position to each laser point return time, scan angle, intensity, etc. Create raw laser point cloud data for the entire survey in *.las (ASPRS v. 1.2) format. Convert data to orthometric elevations by applying a geoid correction.	Leica Cloudpro v 1.2.1
Import raw laser points into manageable blocks (less than 500 MB) to perform manual relative accuracy calibration and filter erroneous points. Classify ground points for individual flight lines.	TerraScan v.14
Using ground classified points per each flight line, test the relative accuracy. Perform automated line-to-line calibrations for system attitude parameters (pitch, roll, heading), mirror flex (scale) and GPS/IMU drift. Calculate calibrations on ground classified points from paired flight lines and apply results to all points in a flight line. Use every flight line for relative accuracy calibration.	TerraMatch v.14
Classify resulting data to ground and other client designated ASPRS classifications (Table 7). Assess statistical absolute accuracy via direct comparisons of ground classified points to ground control survey data.	TerraScan v.14 TerraModeler v.14
Generate bare earth models as triangulated surfaces. Generate highest hit models as a surface expression of all classified points. Export all surface models as ESRI GRID format at a 3.0 foot 1 meter pixel resolution.	TerraScan v.14 TerraModeler v.14 ArcMap v. 10.1
Export intensity images as GeoTIFFS at a 1.5 foot pixel resolution.	TerraScan v.14 TerraModeler v.14 ArcMap v. 10.1

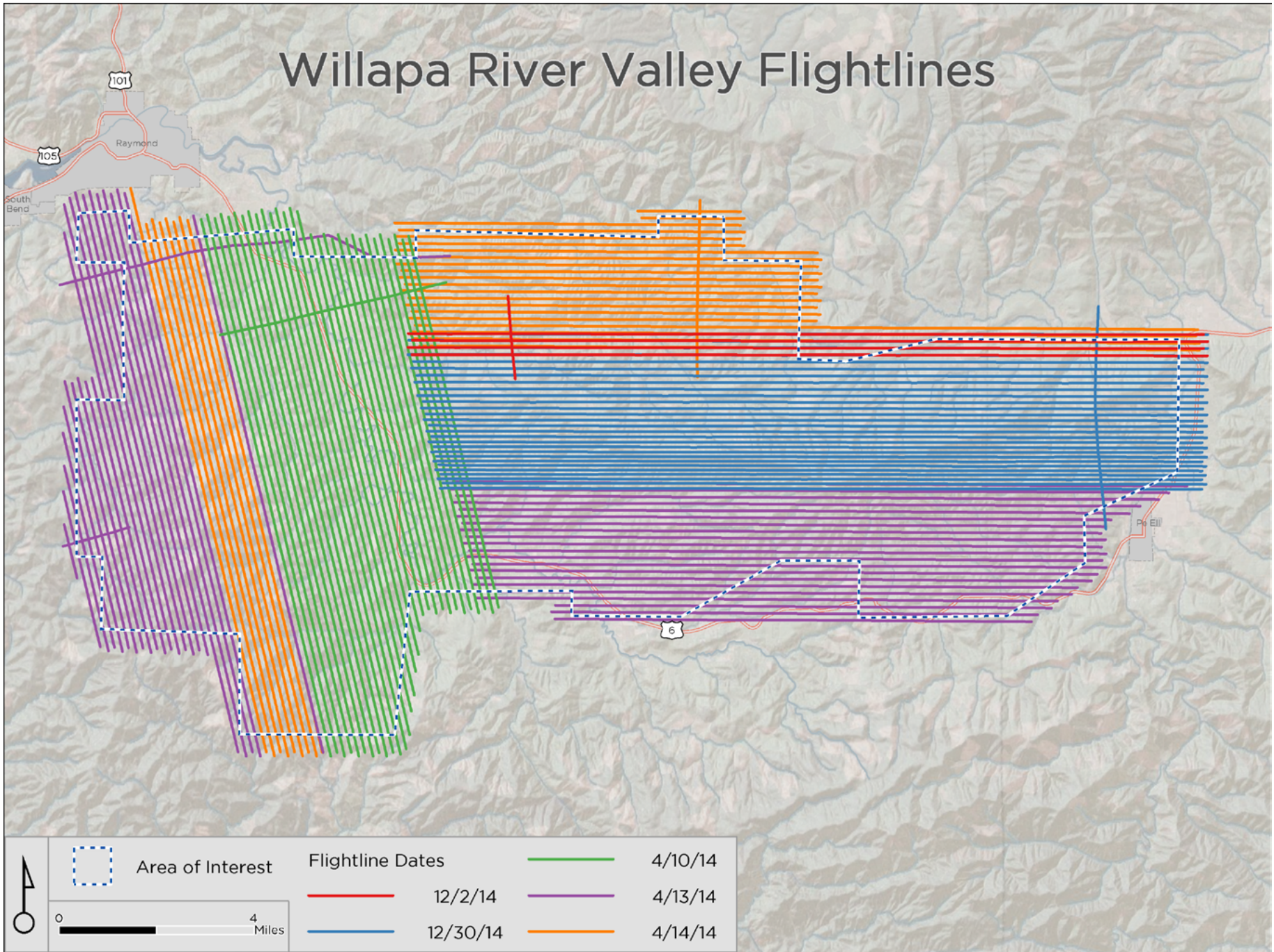
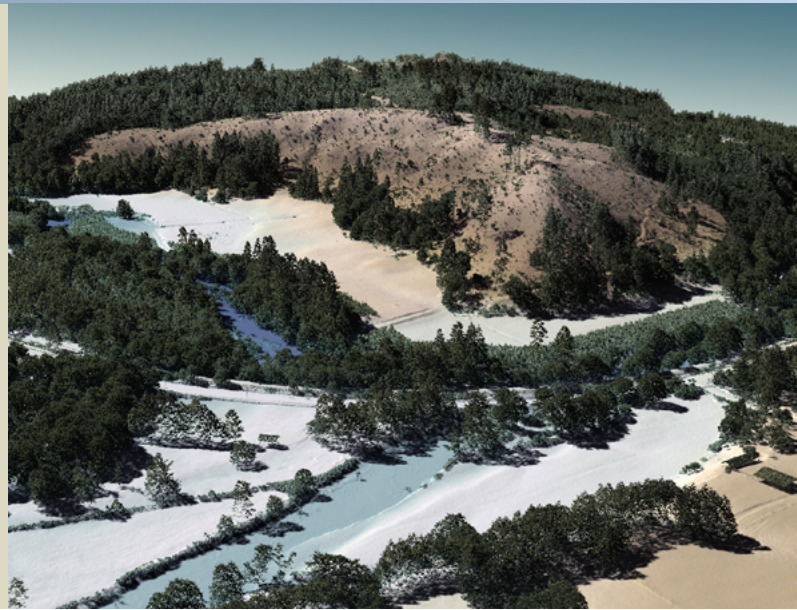


Figure 3: Willapa River Valley Flightlines

View looking northeast at a clearcut mound located just southeast of Holcomb, Washington. The image was created from the gridded LiDAR surface colored by elevation and overlaid with the 3-D LiDAR point cloud.



LiDAR Density

The acquisition parameters were designed to acquire an average first-return density of 8 points/m² (0.74 points/ft²). First return density describes the density of pulses emitted from the laser that return at least one echo to the system. Multiple returns from a single pulse were not considered in first return density analysis. Some types of surfaces (e.g., breaks in terrain, water and steep slopes) may have returned fewer pulses than originally emitted by the laser. First returns typically reflect off the highest feature on the landscape within the footprint of the pulse. In forested or urban areas the highest feature could be a tree, building or power line, while in areas of unobstructed ground, the first return will be the only echo and represents the bare earth surface.

The density of ground-classified LiDAR returns was also analyzed for this project. Terrain character, land cover, and ground surface reflectivity all influenced the density of ground surface returns. In vegetated areas, fewer pulses may penetrate the canopy, resulting in lower ground density.

The average first-return density of LiDAR data for the Willapa River Valley project was 1.44 points/ft² (15.51 points/m²) while the average ground classified density was 0.23 points/ft² (2.46 points/m²) (Table 18). The statistical and spatial distributions of first return densities and classified ground return densities per 100 m x 100 m cell are portrayed in Figure 4 through Figure 7. Please see Appendix B for average density by delivery area.

Table 9: Average LiDAR point densities

Classification	Point Density
First-Return	1.44 points/ft ²
	15.51 points/m ²
Ground Classified	0.23 points/ft ²
	2.46 points/m ²

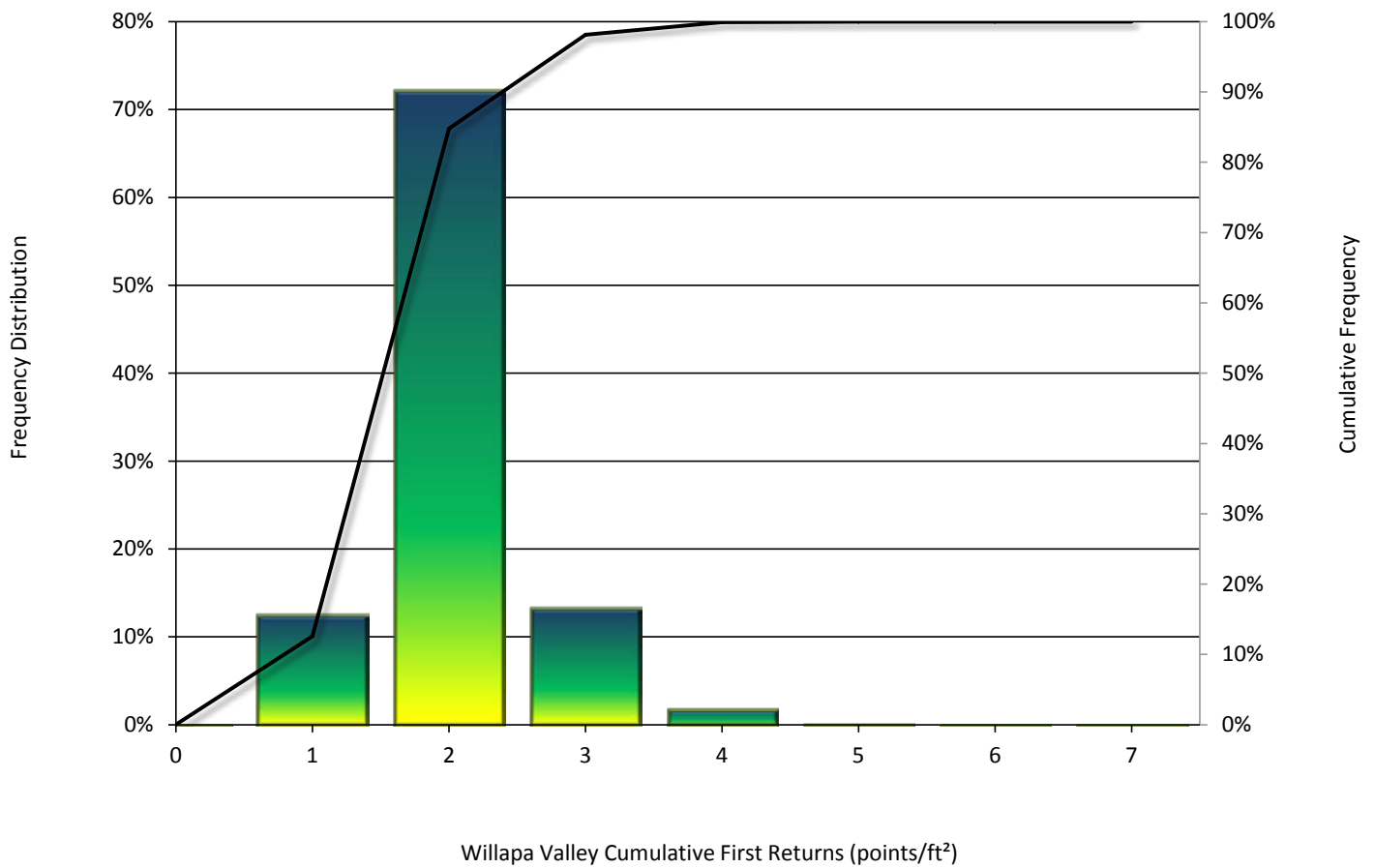


Figure 4: Frequency distribution of first return densities per 100 x 100 m cell

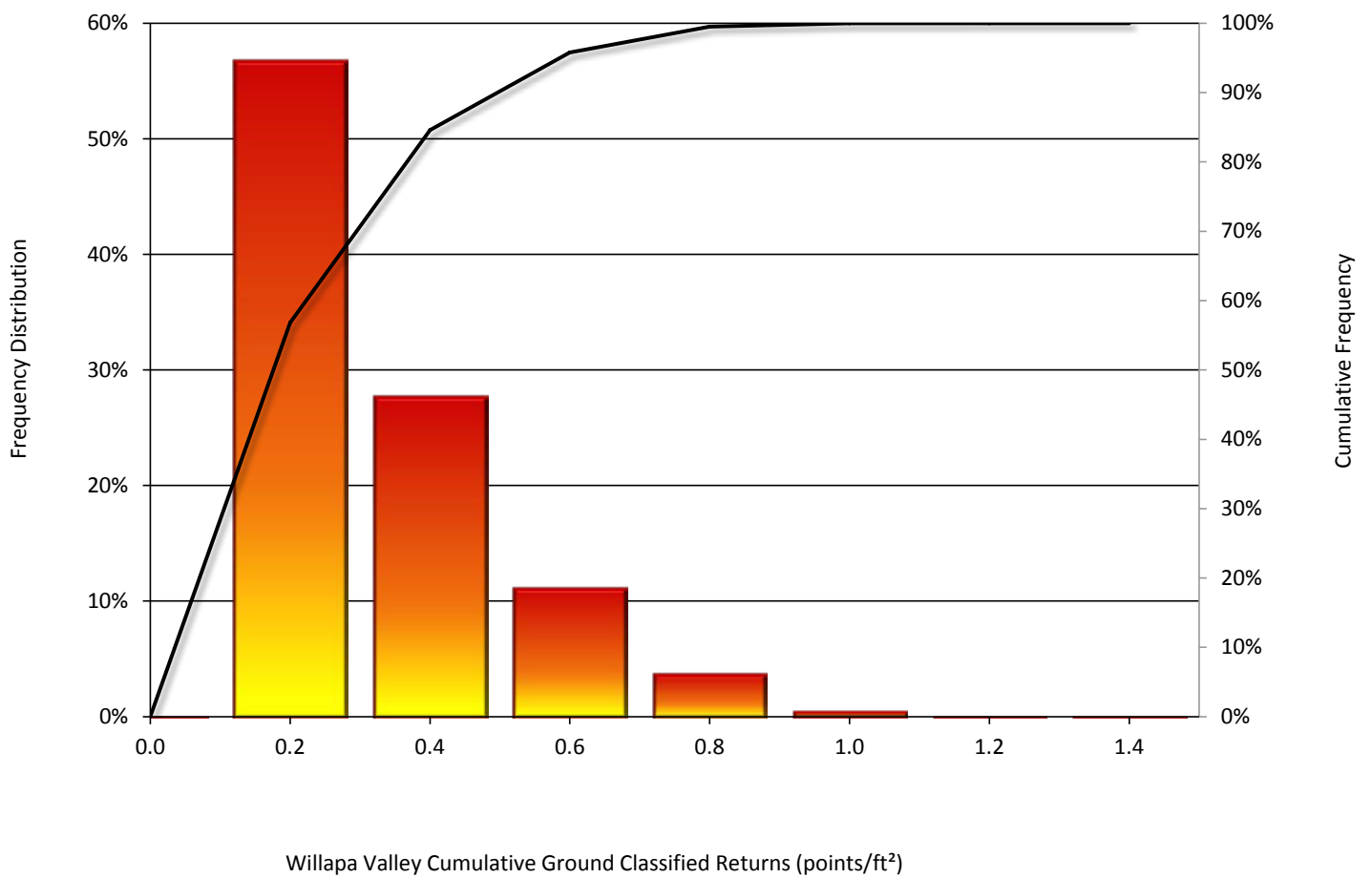


Figure 5: Frequency distribution of ground return densities per 100 x 100 m cell

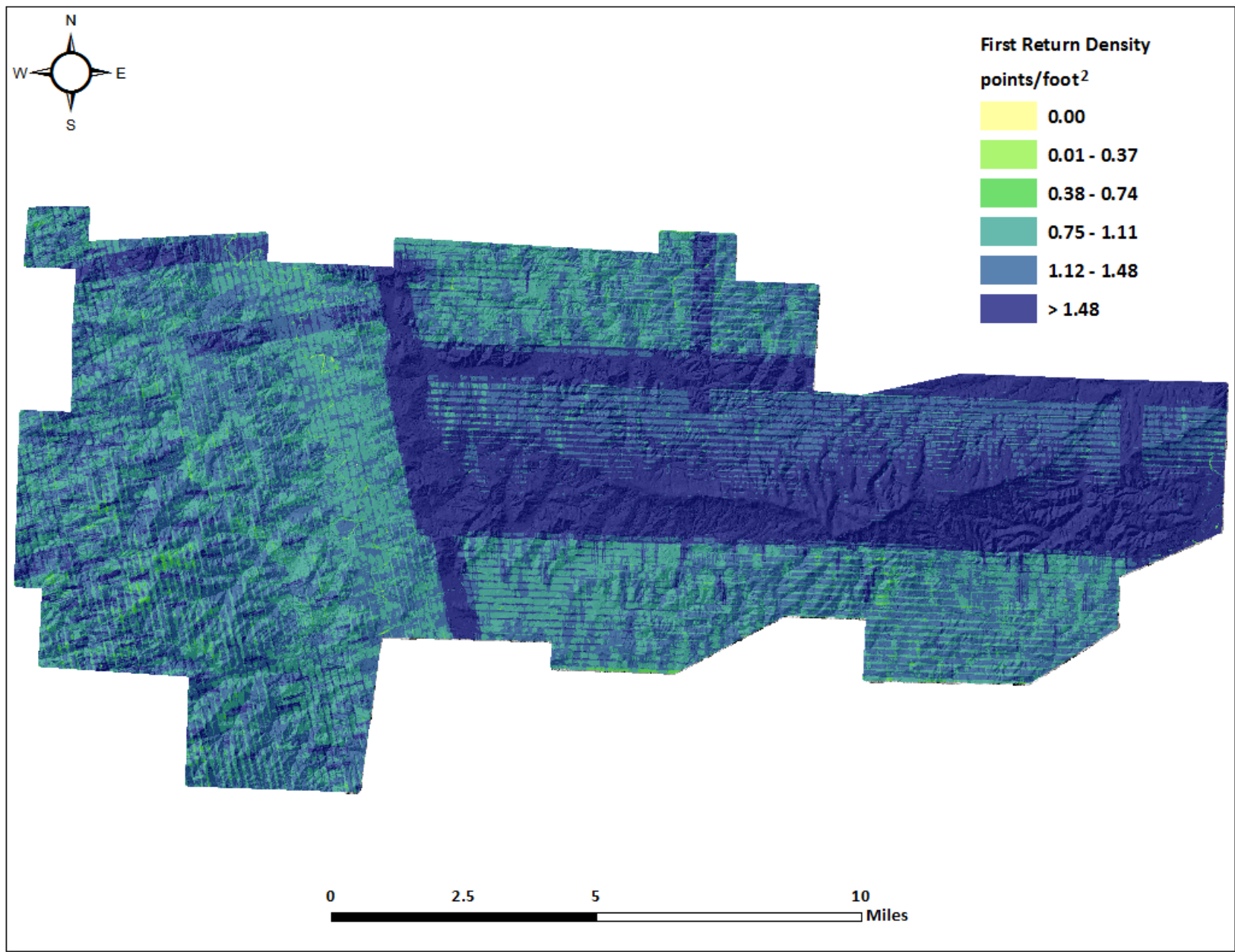


Figure 6: First return density map for the Willapa River Valley site (100 m x 100 m cells)

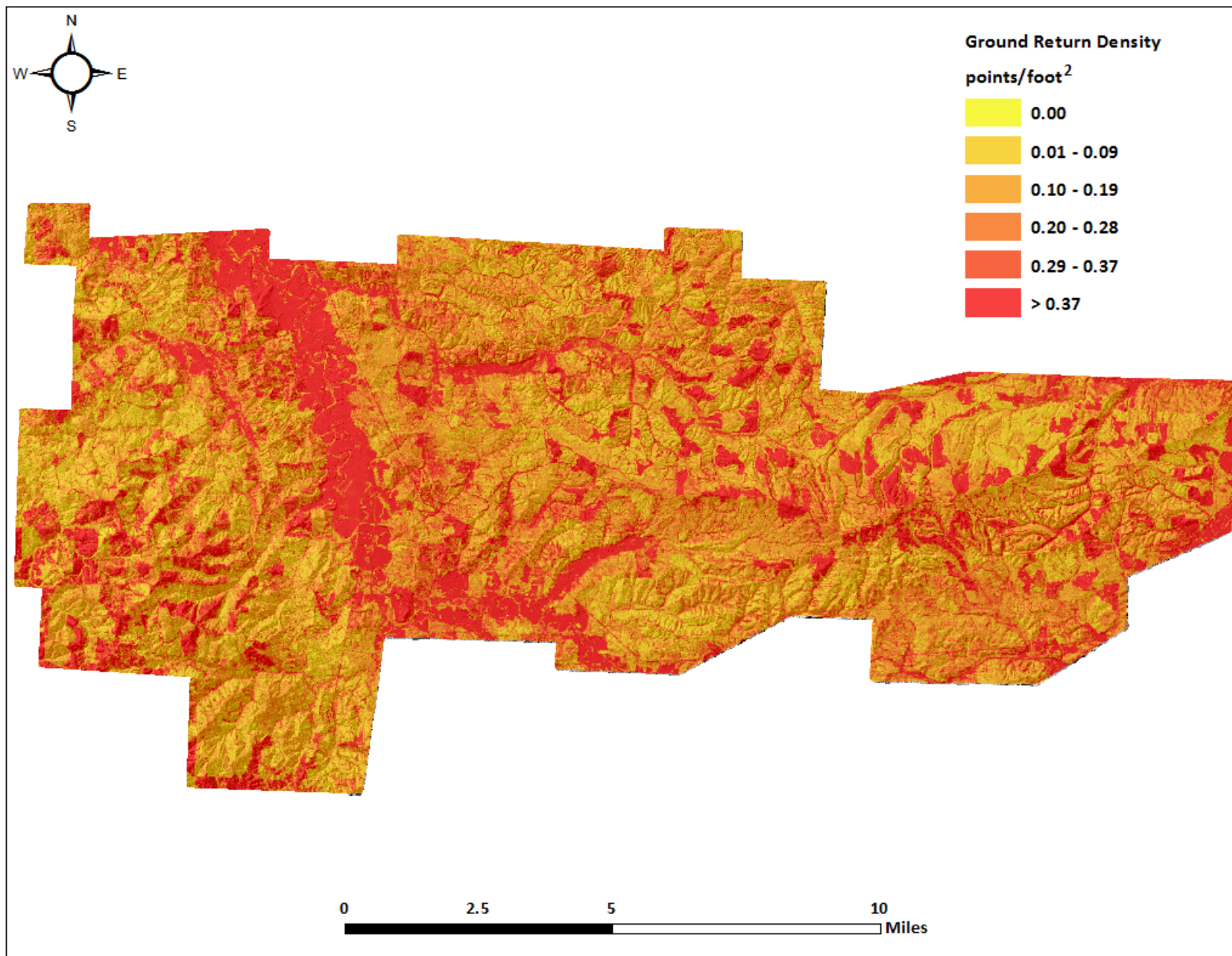


Figure 7: Ground density map for the Willapa River Valley site (100 m x 100 m cells)

LiDAR Accuracy Assessments

The accuracy of the LiDAR data collection can be described in terms of absolute accuracy (the consistency of the data with external data sources) and relative accuracy (the consistency of the dataset with itself). See Appendix A for further information on sources of error and operational measures used to improve relative accuracy.

LiDAR Absolute Accuracy

Absolute accuracy was assessed using Fundamental Vertical Accuracy (FVA) reporting designed to meet guidelines presented in the FGDC National Standard for Spatial Data Accuracy*. FVA compares known RTK ground check point data collected on open, bare earth surfaces with level slope (<20°) to the triangulated surface generated by the LiDAR points. FVA is a measure of the accuracy of LiDAR point data in open areas where the LiDAR system has a high probability of measuring the ground surface and is evaluated at the 95% confidence interval ($1.96 * RMSE$), as shown in Table 10. The mean and standard deviation (sigma σ) of divergence of the ground surface model from ground survey point coordinates are also considered during accuracy assessment. These statistics assume the error for x, y and z is normally distributed, and therefore the skew and kurtosis of distributions are also considered when evaluating error statistics. For the Willapa River Valley LiDAR dataset, 1,027 ground survey points were collected resulting in an average accuracy of 0.013 feet (0.004 meters) (Table 10, Figure 8). Please see Appendix B for accuracy statistics by delivery area.

Table 10: Absolute accuracy

Absolute Accuracy	
Sample	1,027 points
FVA (1.96*RMSE)	0.238 ft 0.072 m
Average	0.013 ft 0.004 m
Median	0.016 ft 0.005 m
RMSE	0.121 ft 0.037 m
Standard Deviation (1 σ)	0.121 ft 0.037 m

* Federal Geographic Data Committee, Geospatial Positioning Accuracy Standards (FGDC-STD-007.3-1998). Part 3: National Standard for Spatial Data Accuracy. <http://www.fgdc.gov/standards/projects/FGDC-standards-projects/accuracy/part3/chapter3>

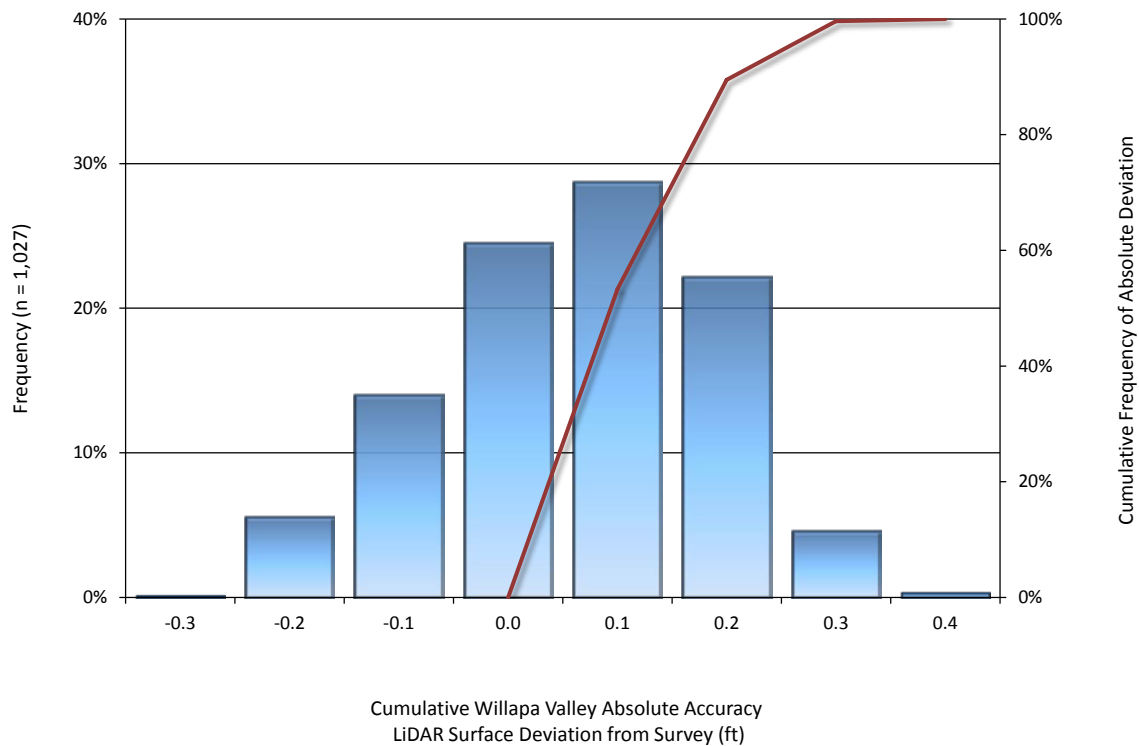


Figure 8: Frequency histogram for LiDAR surface deviation from ground survey point values

LiDAR Vertical Relative Accuracy

Relative vertical accuracy refers to the internal consistency of the data set as a whole: the ability to place an object in the same location given multiple flight lines, GPS conditions, and aircraft attitudes. When the LiDAR system is well calibrated, the swath-to-swath vertical divergence is low (<0.10 meters). The relative vertical accuracy was computed by comparing the ground surface model of each individual flight line with its neighbors in overlapping regions. The average (mean) line to line relative vertical accuracy for the Willapa River Valley data was 00.163 feet (0.050 meters) (Table 11, Figure 9). Please see Appendix B for information on relative accuracy by delivery area.

Table 11: Relative accuracy

Relative Accuracy	
Sample	183 surfaces
Average	0.163 ft
	0.050 m
Median	0.164 ft
	0.050 m
RMSE	0.163 ft
	0.050 m
Standard Deviation (1 σ)	0.035 ft
	0.011 m
1.96 σ	0.069 ft
	0.021 m

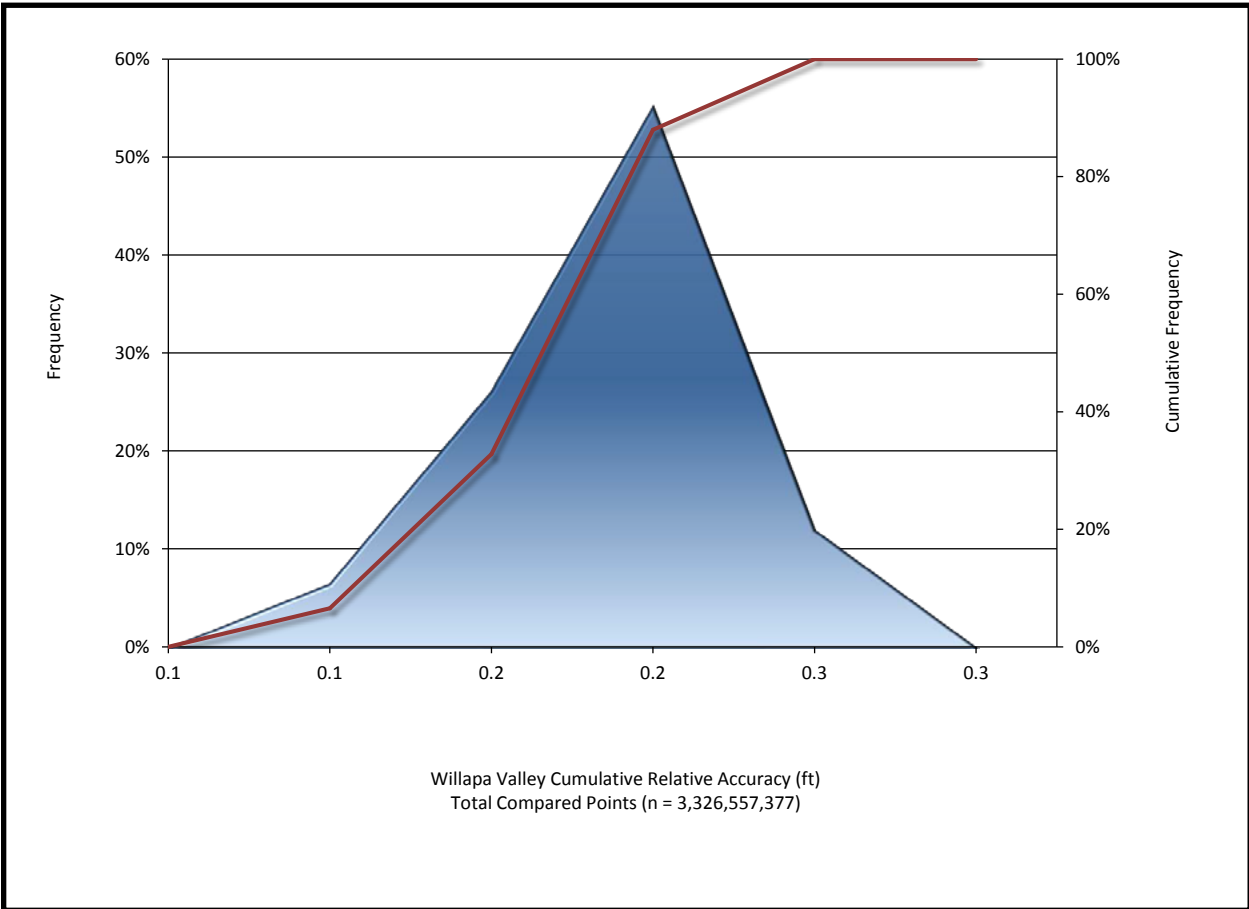
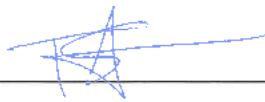


Figure 9: Frequency plot for relative vertical accuracy between flight lines

Certification

Quantum Spatial provided LiDAR services for the Willapa River Valley LiDAR project, Delivery 2, as described in this report.

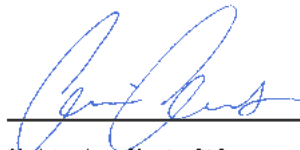
I, Tucker Selko, have reviewed the attached report for completeness and hereby state that it is a complete and accurate report of this project.



Tucker Selko
Project Manager
Quantum Spatial, Inc.

I, Christopher Glantz, being duly registered as a Professional Land Surveyor in and by the state of Washington, hereby certify that the methodologies, static GNSS occupations used during airborne flights, and ground survey point collection were performed using commonly accepted Standard Practices. Field work conducted for this report was conducted between December 2, 2014 and December 30, 2014.

Accuracy statistics shown in the Accuracy Section of this Report have been reviewed by me and found to meet the "National Standard for Spatial Data Accuracy".



4/30/2015

Christopher Glantz, PLS
Professional Land Surveyor
Quantum Spatial, Inc.



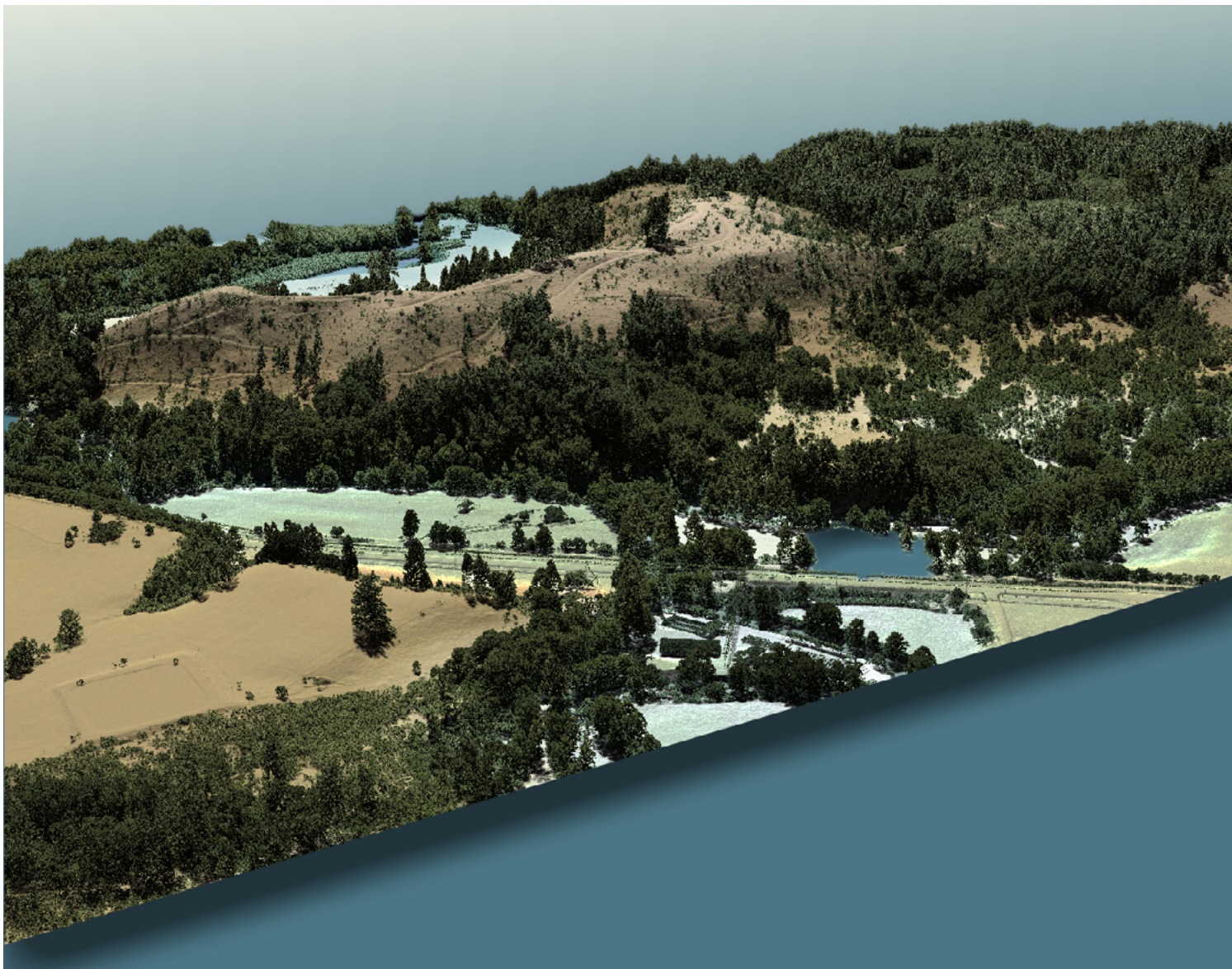


Figure 10: View looking west at a clearcut mound located southeast of Holcomb, Washington. The image was created from the gridded LiDAR surface colored by elevation and overlaid with the 3-D LiDAR point cloud.

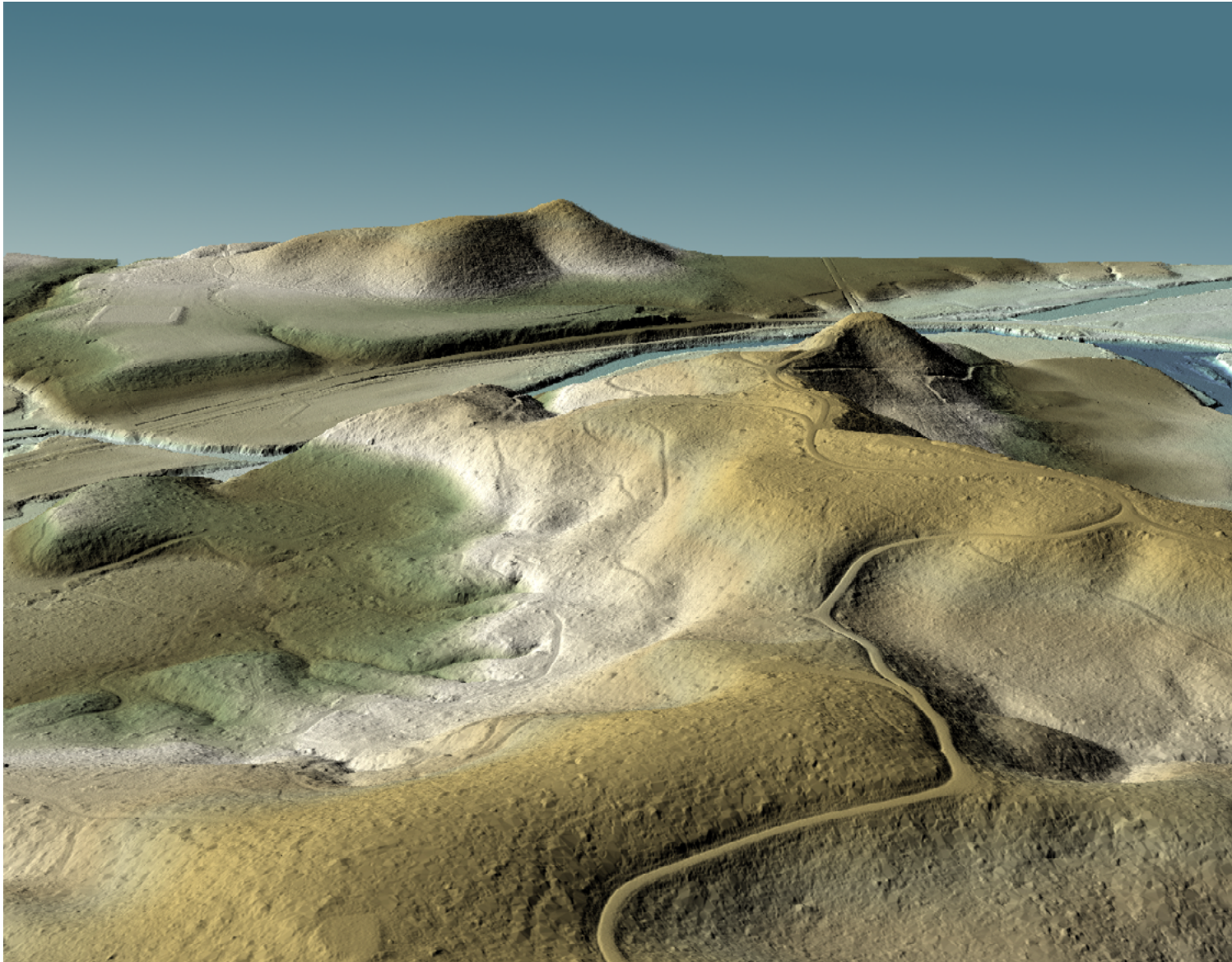


Figure 11: View looking south at a clearcut mound located southeast of Holcomb, Washington. The image was created from the gridded LiDAR surface colored by elevation.

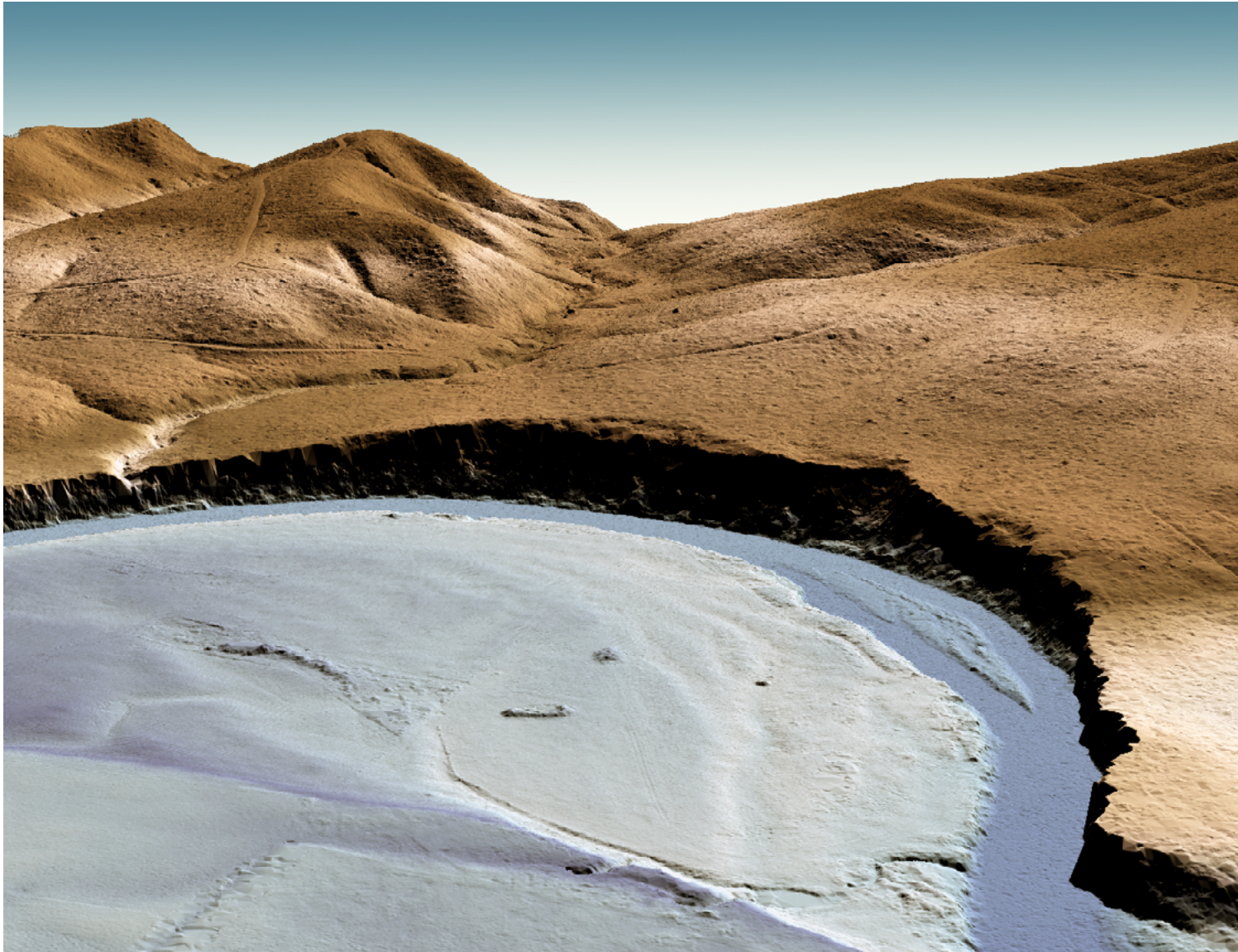


Figure 12: View looking west at a meandering Chehalis River. The image was created from the gridded LiDAR surface colored by elevation.

Glossary

1-sigma (σ) Absolute Deviation: Value for which the data are within one standard deviation (approximately 68th percentile) of a normally distributed data set.

1.96 * RMSE Absolute Deviation: Value for which the data are within two standard deviations (approximately 95th percentile) of a normally distributed data set, based on the FGDC standards for Fundamental Vertical Accuracy (FVA) reporting.

Accuracy: The statistical comparison between known (surveyed) points and laser points. Typically measured as the standard deviation (σ) and root mean square error (RMSE).

Absolute Accuracy: The vertical accuracy of LiDAR data is described as the mean and standard deviation (σ) of divergence of LiDAR point coordinates from ground survey point coordinates. To provide a sense of the model predictive power of the dataset, the root mean square error (RMSE) for vertical accuracy is also provided. These statistics assume the error distributions for x, y, and z are normally distributed, and thus the skew and kurtosis of distributions are also considered when evaluating error statistics.

Relative Accuracy: Relative accuracy refers to the internal consistency of the data set (i.e., the ability to place a laser point in the same location over multiple flight lines), GPS conditions, and aircraft attitudes. Affected by system attitude offsets, scale, and GPS/IMU drift, internal consistency is measured as the divergence between points from different flight lines within an overlapping area. Divergence is most apparent when flight lines are opposing. When the LiDAR system is well calibrated, the line-to-line divergence is low (<10 cm).

Root Mean Square Error (RMSE): A statistic used to approximate the difference between real-world points and the LiDAR points. It is calculated by squaring all the values, then taking the average of the squares and taking the square root of the average.

Data Density: A common measure of LiDAR resolution, measured as points per square meter.

Digital Elevation Model (DEM): File or database made from surveyed points, containing elevation points over a contiguous area. Digital terrain models (DTM) and digital surface models (DSM) are types of DEMs. DTMs consist solely of the bare earth surface (ground points), while DSMs include information about all surfaces, including vegetation and man-made structures.

Intensity Values: The peak power ratio of the laser return to the emitted laser, calculated as a function of surface reflectivity.

Nadir: A single point or locus of points on the surface of the earth directly below a sensor as it progresses along its flight line.

Overlap: The area shared between flight lines, typically measured in percent. 100% overlap is essential to ensure complete coverage and reduce laser shadows.

Pulse Rate (PR): The rate at which laser pulses are emitted from the sensor; typically measured in thousands of pulses per second (kHz).

Pulse Returns: For every laser pulse emitted, the number of wave forms (i.e., echoes) reflected back to the sensor. Portions of the wave form that return first are the highest element in multi-tiered surfaces such as vegetation. Portions of the wave form that return last are the lowest element in multi-tiered surfaces.

Real-Time Kinematic (RTK) Survey: A type of surveying conducted with a GPS base station deployed over a known monument with a radio connection to a GPS rover. Both the base station and rover receive differential GPS data and the baseline correction is solved between the two. This type of ground survey is accurate to 1.5 cm or less.

Post-Processed Kinematic (PPK) Survey: GPS surveying is conducted with a GPS rover collecting concurrently with a GPS base station set up over a known monument. Differential corrections and precisions for the GNSS baselines are computed and applied after the fact during processing. This type of ground survey is accurate to 1.5 cm or less.

Scan Angle: The angle from nadir to the edge of the scan, measured in degrees. Laser point accuracy typically decreases as scan angles increase.

Native LiDAR Density: The number of pulses emitted by the LiDAR system, commonly expressed as pulses per square meter.

Appendix A - Accuracy Controls

Relative Accuracy Calibration Methodology:

Manual System Calibration: Calibration procedures for each mission require solving geometric relationships that relate measured swath-to-swath deviations to misalignments of system attitude parameters. Corrected scale, pitch, roll and heading offsets were calculated and applied to resolve misalignments. The raw divergence between lines was computed after the manual calibration was completed and reported for each survey area.

Automated Attitude Calibration: All data were tested and calibrated using TerraMatch automated sampling routines. Ground points were classified for each individual flight line and used for line-to-line testing. System misalignment offsets (pitch, roll and heading) and scale were solved for each individual mission and applied to respective mission datasets. The data from each mission were then blended when imported together to form the entire area of interest.

Automated Z Calibration: Ground points per line were used to calculate the vertical divergence between lines caused by vertical GPS drift. Automated Z calibration was the final step employed for relative accuracy calibration.

LiDAR accuracy error sources and solutions:

Type of Error	Source	Post Processing Solution
GPS (Static/Kinematic)	Long Base Lines	None
	Poor Satellite Constellation	None
	Poor Antenna Visibility	Reduce Visibility Mask
Relative Accuracy	Poor System Calibration	Recalibrate IMU and sensor offsets/settings
	Inaccurate System	None
Laser Noise	Poor Laser Timing	None
	Poor Laser Reception	None
	Poor Laser Power	None
	Irregular Laser Shape	None

Operational measures taken to improve relative accuracy:

Low Flight Altitude: Terrain following was employed to maintain a constant above ground level (AGL). Laser horizontal errors are a function of flight altitude above ground (about 1/3000th AGL flight altitude).

Focus Laser Power at narrow beam footprint: A laser return must be received by the system above a power threshold to accurately record a measurement. The strength of the laser return (i.e., intensity) is a function of laser emission power, laser footprint, flight altitude and the reflectivity of the target. While surface reflectivity cannot be controlled, laser power can be increased and low flight altitudes can be maintained.

Reduced Scan Angle: Edge-of-scan data can become inaccurate. The scan angle was reduced to a maximum of 3120 from nadir, creating a narrow swath width and greatly reducing laser shadows from trees and buildings.

Quality GPS: Flights took place during optimal GPS conditions (e.g., 6 or more satellites and PDOP [Position Dilution of Precision] less than 3.0). Before each flight, the PDOP was determined for the survey day. During all flight times, a dual frequency DGPS base station recording at 1 second epochs was utilized and a maximum baseline length between the aircraft and the control points was less than 13 nm at all times.

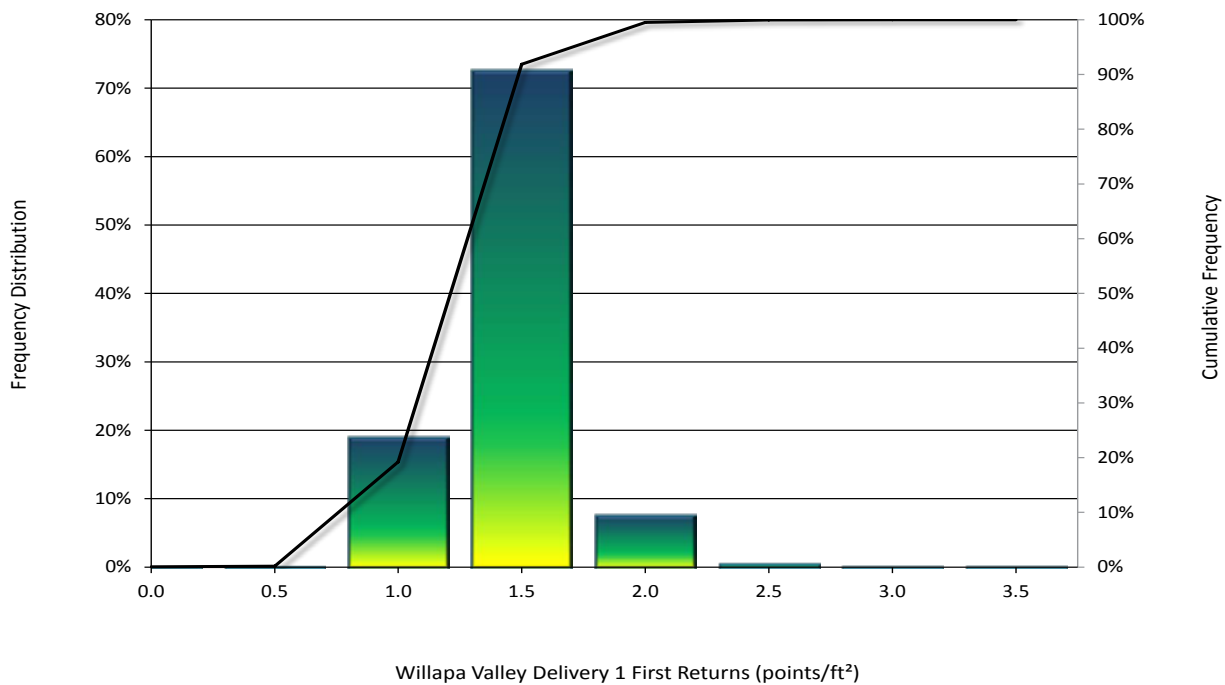
Ground Survey: Ground survey point accuracy (<1.5 cm RMSE) occurs during optimal PDOP ranges and targets a minimal baseline distance of 4 miles between GPS rover and base. Robust statistics are, in part, a function of sample size (n) and distribution. Ground survey points are distributed to the extent possible throughout multiple flight lines and across the survey area.

50% Side-Lap (100% Overlap): Overlapping areas are optimized for relative accuracy testing. Laser shadowing is minimized to help increase target acquisition from multiple scan angles. Ideally, with a 50% side-lap, the nadir portion of one flight line coincides with the swath edge portion of overlapping flight lines. A minimum of 50% side-lap with terrain-followed acquisition prevents data gaps.

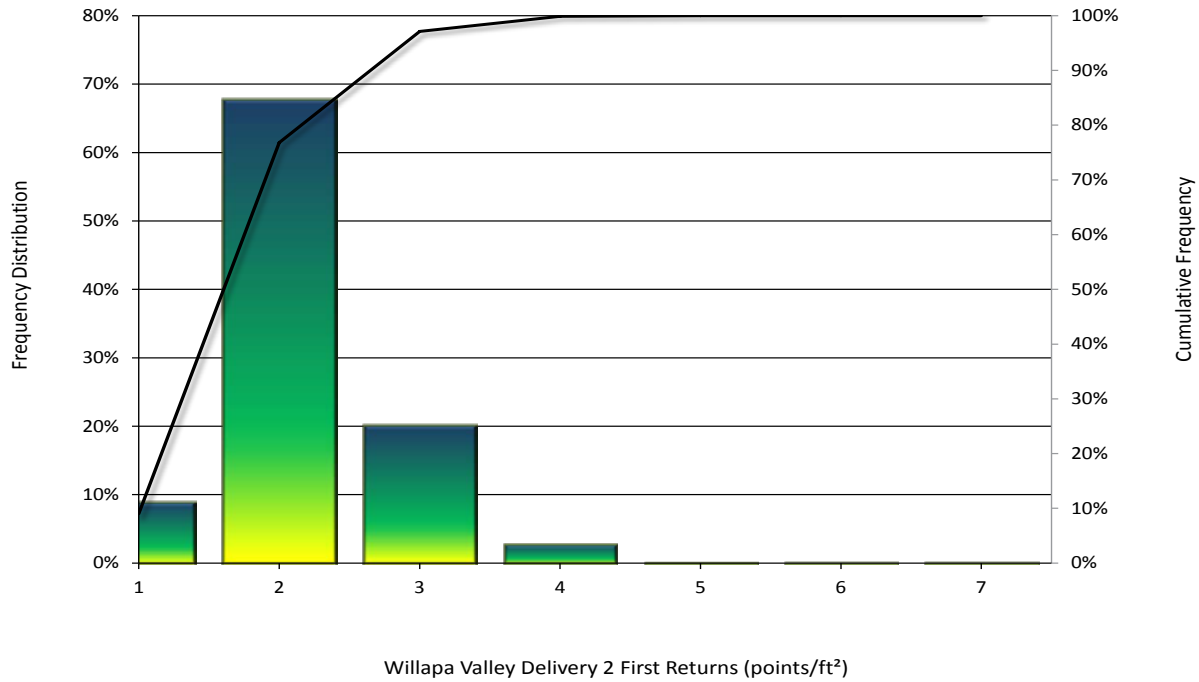
Opposing Flight Lines: All overlapping flight lines have opposing directions. Pitch, roll and heading errors are amplified by a factor of two relative to the adjacent flight line(s), making misalignments easier to detect and resolve.

LiDAR Density

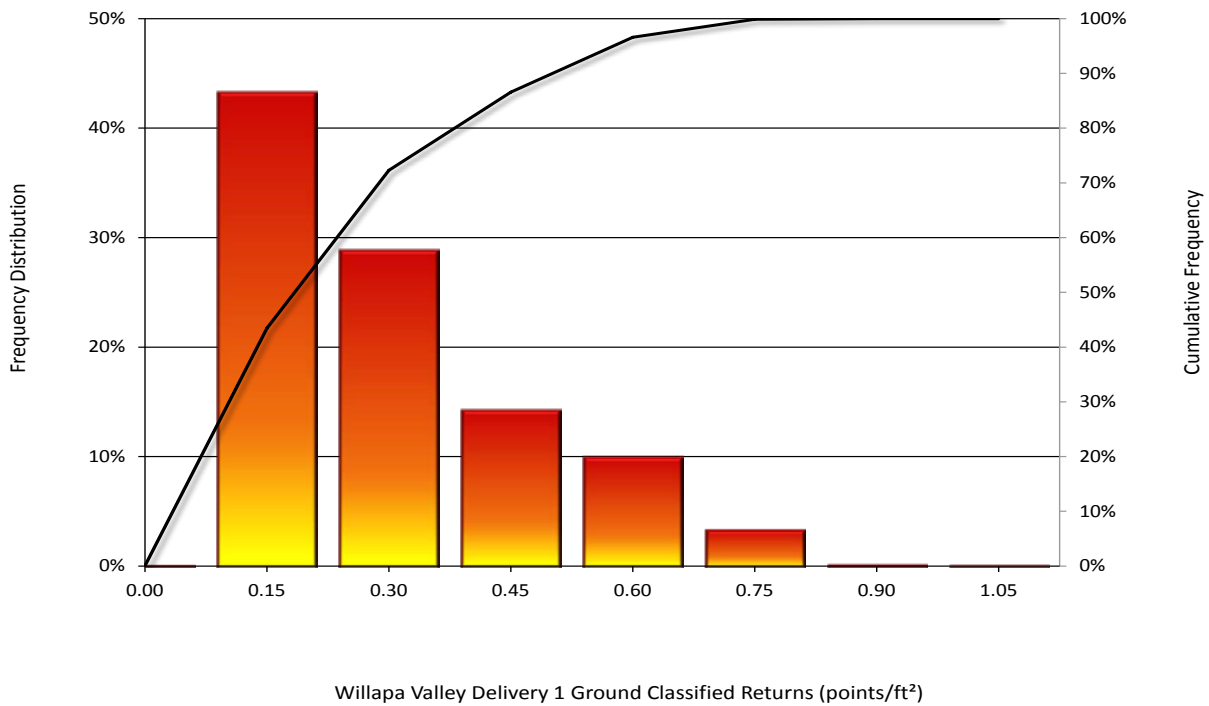
Classification	Point Density		
	Delivery 1	Delivery 2	Cumulative
First-Return	1.17 points/ft ²	1.58 points/ft ²	1.44 points/ft ²
	12.64 points/m ²	17.06 points/m ²	15.51 points/m ²
Ground Classified	0.23 points/ft ²	0.23 points/ft ²	0.23 points/ft ²
	2.46 points/m ²	2.46 points/m ²	2.46 points/m ²



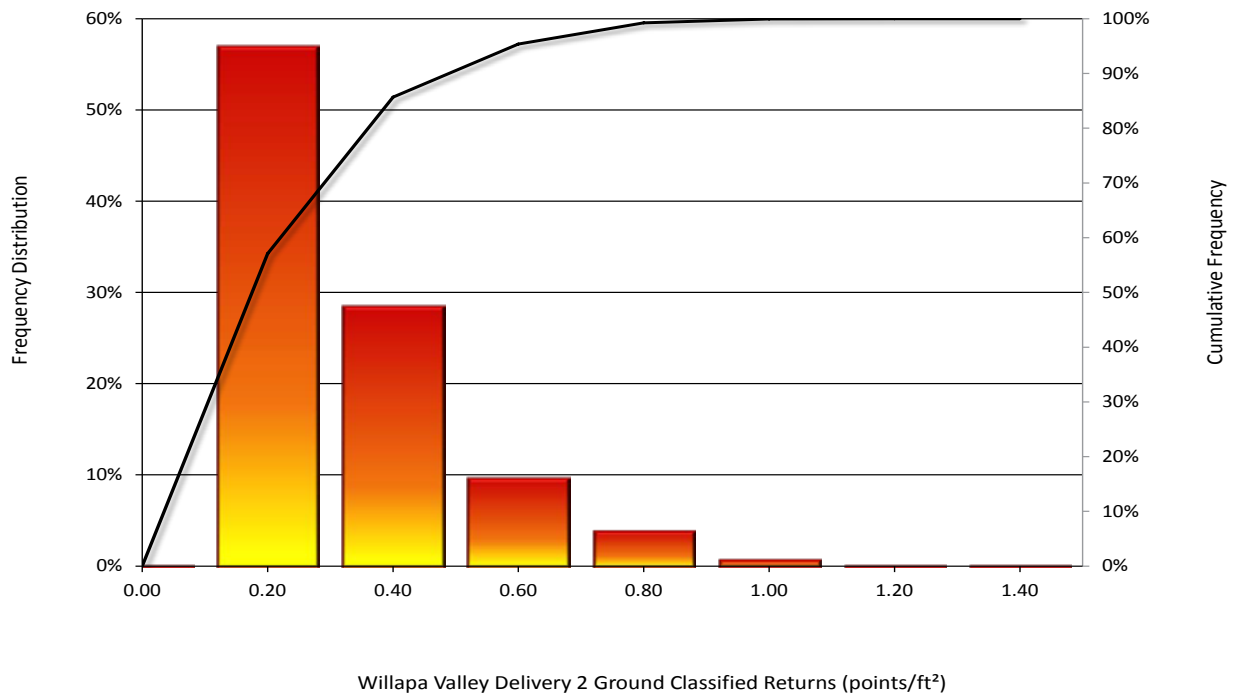
Delivery 1 - frequency distribution of first return densities per 100 x 100 m cell



Delivery 2 - frequency distribution of first return densities per 100 x 100 m cell



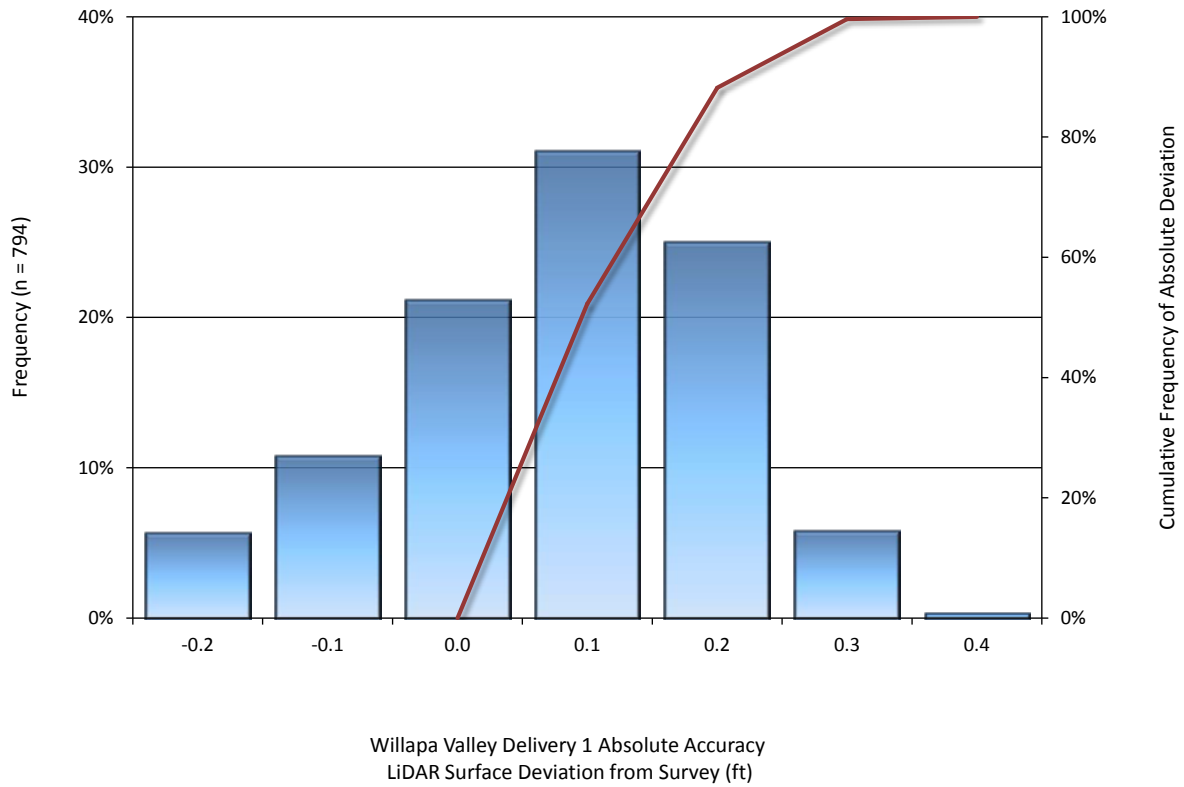
Delivery 1 - frequency distribution of ground return densities per 100 x 100 m cell



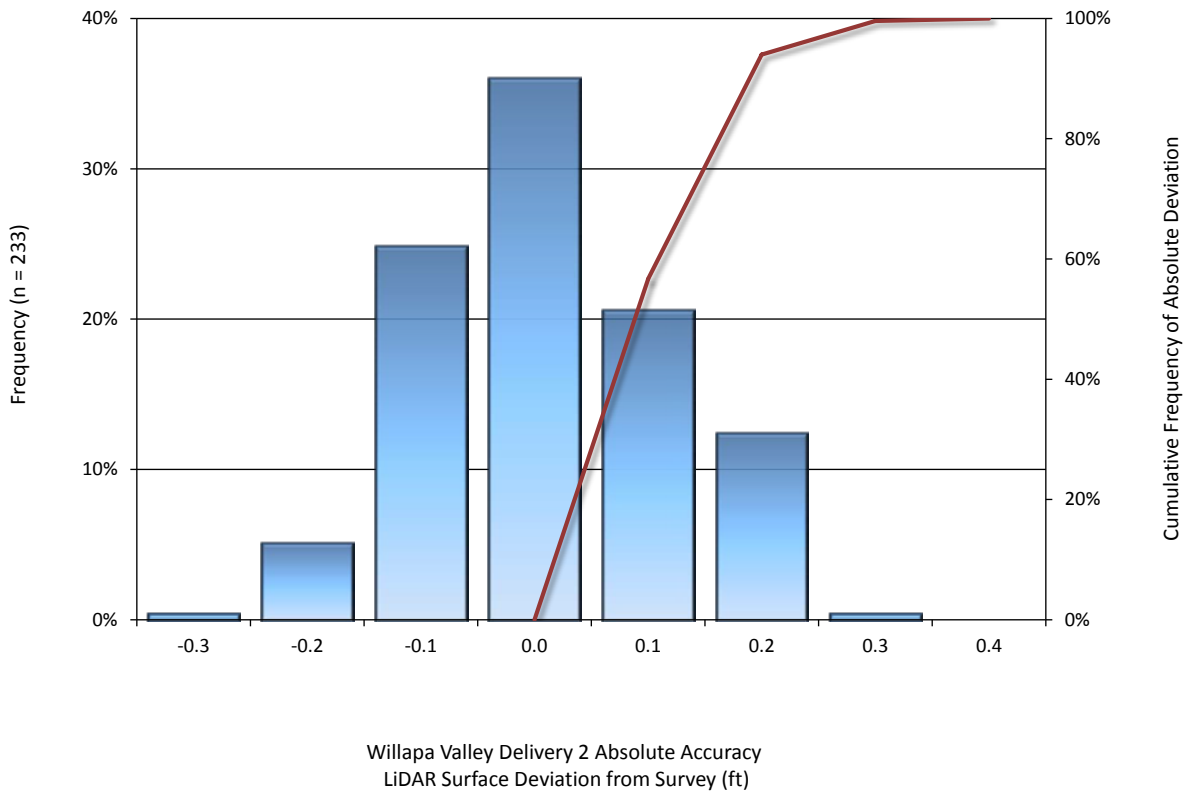
Delivery 2 - frequency distribution of ground return densities per 100 x 100 m cell

Absolute Accuracy

Absolute Accuracy			
	Delivery 1	Delivery 2	Cumulative
Sample	794 points	233 points	1027 points
FVA (1.96*RMSE)	0.244 ft 0.074 m	0.215 ft 0.065 m	0.238 ft 0.072 m
Average	0.027 ft 0.008 m	-0.034 ft -0.010 m	0.013 ft 0.004 m
Median	0.033 ft 0.010 m	-0.043 ft -0.013 m	0.016 ft 0.005 m
RMSE	0.125 ft 0.038 m	0.110 ft 0.033 m	0.121 ft 0.037 m
Standard Deviation (1 σ)	0.122 ft 0.037 m	0.104 ft 0.032 m	0.121 ft 0.037 m



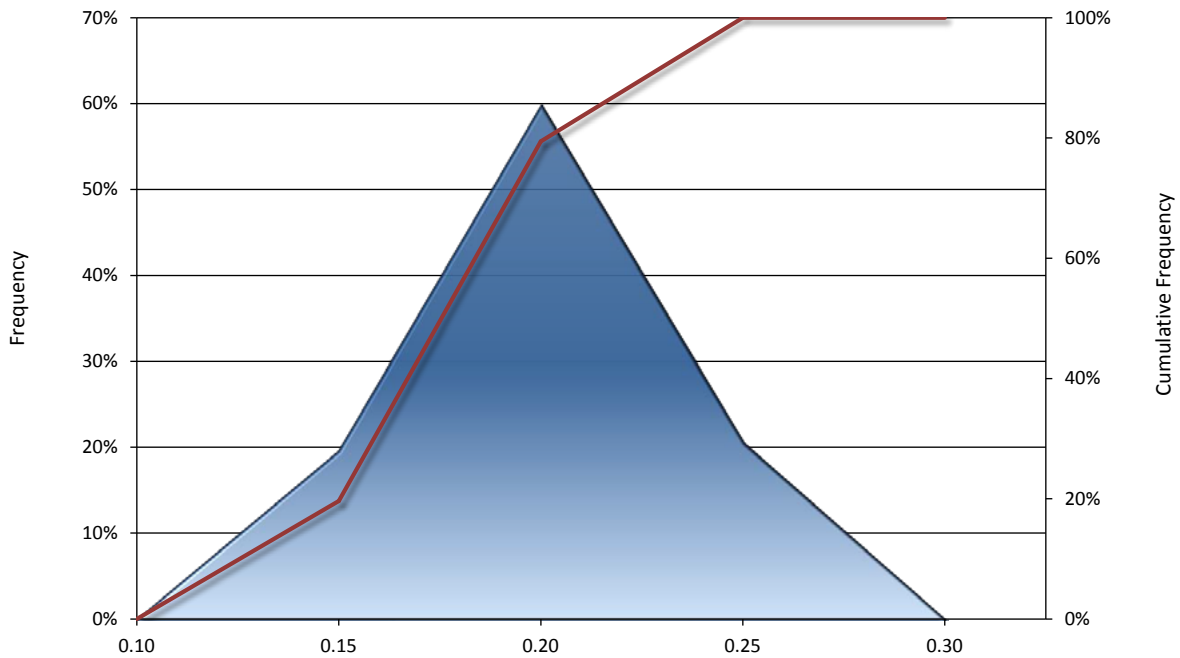
Delivery 1 - frequency histogram for LiDAR surface deviation from ground survey point values



Delivery 2 - frequency histogram for LiDAR surface deviation from ground survey point values

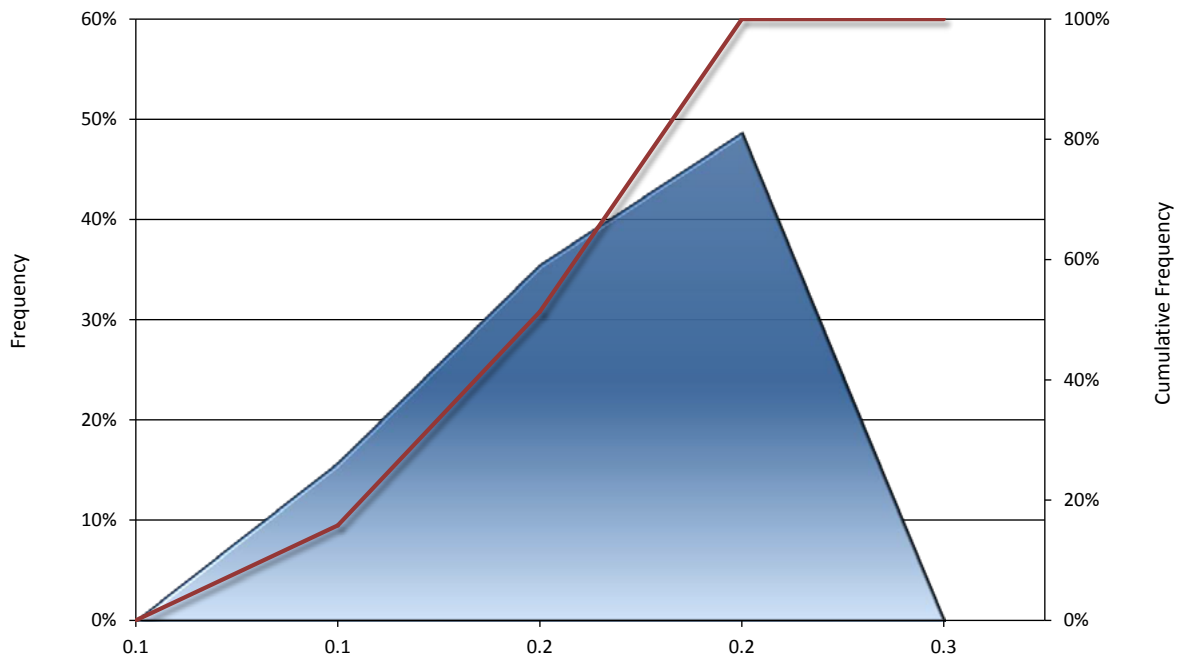
Relative Accuracy

Relative Accuracy			
	Delivery 1	Delivery 2	Cumulative
Sample	107 surfaces	76 surfaces	183 surfaces
Average	0.167 ft	0.159 ft	0.163 ft
	0.051 m	0.048 m	0.050 m
Median	0.173 ft	0.149 ft	0.164 ft
	0.053 m	0.046 m	0.050 m
RMSE	0.176 ft	0.143 ft	0.163 ft
	0.054 m	0.044 m	0.050 m
Standard Deviation (1σ)	0.028 ft	0.035 ft	0.035 ft
	0.009 m	0.011 m	0.011 m
1.96 σ	0.055 ft	0.068 ft	0.069 ft
	0.017 m	0.021 m	0.021 m



Willapa Valley Delivery 1 Relative Accuracy (ft)
Total Compared Points (n = 1,845,149,381)

Delivery 1 - Frequency plot for relative vertical accuracy between flight lines



Willapa Valley Delivery 2 Relative Accuracy (ft)
 Total Compared Points (n = 1,481,407,996)

Delivery 2 - Frequency plot for relative vertical accuracy between flight lines